

# Save the Date!

## PCORI Metastatic Key Stakeholder Webinar Series

The **goals** of this FREE webinar series are to:

- 1) engage key stakeholders in cancer metastasis; and
- 2) advance patient-centered metastasis research

**December 5, 2018**  
**11a.m. – Noon CDT**  
Palliative care,  
goals of care and  
symptom  
management

**January 16, 2019**  
**11a.m. – Noon CDT**  
Access disparities in  
cancer and cancer  
research

**February 12, 2019**  
**Noon – 1p.m. CDT**  
Metastatic prostate  
cancer research  
priorities

**March 13, 2019**  
**Noon – 1p.m. CDT**  
Challenges in clinical  
trials and tissue  
collection in  
metastatic cancer

Information about **registration** and webinar objectives to come.

Target audience: Patients, families, clinicians and researchers

THE UNIVERSITY OF KANSAS  
CANCER CENTER



This webinar series is funded in part through a Eugene Washington PCORI Engagement Award (6102-MRS).

# PCORI Metastatic Cancer Webinar Series

## Webinar 1: Palliative Care - Fostering Quality of Life and Symptom Management

**Target Audience:**  
Patients, Families,  
Clinicians, &  
Researchers

**December 5, 2018: 11a.m. – Noon CDT**

### Webinar Topics

- ❖ What is palliative care?
- ❖ How and when to introduce palliative care discussions
- ❖ Comprehensive, patient-centered symptom management

**Register** in advance for this FREE webinar:

<http://bit.ly/PalliativeCareMRS>

After registering, you will receive a confirmation email containing information about joining the webinar.

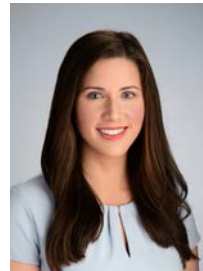
**Marie Bakitas, DNSc, CRNP, FAAN**  
Marie L. O’Koren Endowed Chair  
University of Alabama at Birmingham  
School of Nursing



**Ginny Mason, RN**  
President & Executive Director  
Inflammatory Breast Cancer  
Research Foundation



**Elizabeth Wulff-Burchfield, MD**  
Assistant Professor  
University of Kansas  
School of Medicine  
Medical Oncology



# PCORI Metastatic Cancer Webinar Series

## Webinar 2: Access Disparities in Cancer & Cancer Research

**Target Audience:**  
Patients, Families,  
Clinicians, &  
Researchers

**January 16, 2019: 11AM – 12N CDT**

### Webinar Topics

- ❖ Access to cancer care and cancer research in rural vs. urban settings
- ❖ How access disparities influence survival outcomes
- ❖ Impact of financial toxicity on patient reported quality of life and outcomes
- ❖ Models of care to remove barriers to care and research opportunities

**Register** in advance for this FREE webinar:

<http://bit.ly/AccessCareMRS>

After registering, you will receive a confirmation email containing information about joining the webinar.

**Joseph Unger, PhD, MPH**  
Assistant Professor  
Public Health Sciences Division  
Fred Hutchinson Cancer Center



**Lisa Smith, MSSW, LMSW  
& PhD Candidate**  
University of Louisville  
Kent School of Social Work



**Gary C. Doolittle, MD**  
Capital Federal Masonic Professor,  
Medical Oncology  
University of Kansas  
School of Medicine



# PCORI Metastatic Cancer Webinar Series

## Webinar 3: Metastatic Prostate Cancer Research Priorities

**Target Audience:**  
Patients, Families,  
Clinicians, &  
Researchers

**February 12, 2019: 12N – 1pm CDT**

### Webinar Topics

- ❖ Perspectives from a family member
- ❖ Androgen deprivation therapy symptom management & quality of life
- ❖ Hormone resistance cancer therapies and translational research
- ❖ Bone metastasis research priorities

**Register** in advance for this FREE webinar:

<http://bit.ly/MetProstateCancerMRS>

After registering, you will receive a confirmation email containing information about joining the webinar.



**Leah Cook, PhD**  
Assistant Professor  
University of Nebraska Medical Center  
College of Medicine  
Fred & Pamela Buffett Cancer Center



**Broderick Crawford, BS**  
Executive Director  
NBC Community  
Development Corporation

**Sally Maliski, PhD, RN, FAAN**  
Dean & Professor  
University of Kansas  
School of Nursing  
University of Kansas Cancer Center



**Benjamin Teply, MD**  
Assistant Professor  
University of Nebraska Medical Center  
College of Medicine  
Fred & Pamela Buffett Cancer Center



# PCORI Metastatic Cancer Webinar Series

## Webinar 4: Challenges in Clinical Trials and Tissue Collection in Metastatic Cancer

**Target Audience:**  
Patients, Families,  
Clinicians, &  
Researchers

**March 13, 2019: 12N – 1pm CDT**

### Webinar Topics

- ❖ Clinical trials for patients with metastasis
- ❖ Barriers to accessing clinical trials
- ❖ Tissue collection in metastatic cancer research

**Register** in advance for this FREE webinar:

<http://bit.ly/MetClinicalTrialsMRS>

After registering, you will receive a confirmation email containing information about joining the webinar.



**Cheryl Jernigan, CPA, FACHE**  
Member, Central Institutional Review Board for Late Phase Adult Clinical Trials  
National Cancer Institute



**Kim Kimminau, PhD**  
Associate Director, Frontiers: University of Kansas Clinical and Translational Science Institute

**Connie Rufenbarger**  
Co-Founder, Susan G. Komen for the Cure Tissue Bank, Indiana University Simon Cancer Center



**Scott Weir, PharmD, PhD**  
Director, Institute for Advancing Medical Innovation, University of Kansas School of Medicine

