

## Oncology Nursing Society Clinical Practice Update

Kristine B. LeFebvre, DNP, RN, NPD-BC, AOCN  
Oncology Clinical Specialist, ONS

1

## Disclosures

- No relevant financial relationships with ineligible companies\* to disclose.
- \*An ineligible company is one whose primary business is producing, marketing, selling, re-selling, or distributing healthcare products used on or by patients.



2

## Meet the Clinical Leadership at ONS



JwbfkKodmju  
Hfegpi l j uGUWNS  
PTHSX' uGUHM.  
-E JwbfkHfegpi l j.  
Sj l ujuw-  
HmgiHqenHfegpi l jw



P fygj k uq -uK XS  
WS uPTHSX' i  
-E TSPX uq -.  
Sj l ujuw-  
I ujuw-  
T uhtq l -S zwacl  
UwHyh



Ofr j k j r j w  
R XS uWS l  
FLHSXZH uPTHSX'  
-E TSPX uq j w  
Nufef  
R fefljwktuhtq l -S  
S zwacl UwHyh



3

## Meet the Oncology Clinical Specialists



PwK uKjg {u j  
ISUWS uUI2  
GH uTHS'  
-E TSPX uq j w  
R fefljwktuhtq l -S



HmgiHfegpi l j w  
R XS uWS u  
FLHSXZH  
PTHSX' uPTHSX'  
-E TSPX uq j w  
uhtq l -S



JwbfkKodmju  
ISUWS u  
PTHSX' uPTHSX'  
-E TSPX uq j w  
uhtq l -S



PwK uKjg {u j  
ISUWS uUI2  
GH uTHS'  
-E TSPX uq j w  
R fefljwktuhtq l -S



R fefljwktuhtq l -S  
Ohtq l -S  
R XS uWS u  
PTHSX' uPTHSX'  
-E TSPX uq j w  
R fefljwktuhtq l -S




GwbfkKodmju  
GXSW uTHS'  
-E TSPX uq j w  
uhtq l -S



4


## How to ask ONS clinical questions

- Submit questions via the website <https://clinicalhelp.ons.org/>
- Found in the "Contact Us" link at the bottom of ONS.org homepage
- ONS Member-only benefit



### CLINICAL INQUIRIES

If you are unable to find answers to your clinical questions through our online ONS resources and you are an ONS member, reach out to our experienced Oncology Nursing Specialists at our Clinical Helpdesk. We'll get back to you within two business days. Reach out to our experts at <https://clinicalhelp.ons.org>



5

## Clinical FAQs

Search our FAQs

My Account

Membership & Chapters

Orders & Shipping


Meetings & Events

Nursing Continuing Professional Development

ONCC Certification

Institutional Purchases and Support

The ONS.org Login Update



6

## ONS Communities

[communities.ons.org](https://communities.ons.org)

- Reach out and connect with colleagues across the country
- Apply for volunteer opportunities



7

## Tried and True Resources

- Chemotherapy/Immunotherapy Guidelines
- Access Device Standards of Practice (New edition end of 2023)
- Safe Handling of Hazardous Drugs (New edition end of 2023)
- Position statements



8

## Digital Rights Management

- Digital eBook purchases
- Starts in November 2023
- Access your bookshelf through your ONS username and password
- Includes eBooks with courses, available after course is complete
- Users can search books, figures, and tables, highlight and bookmark
- Access available through Vital Source Bookshelf application

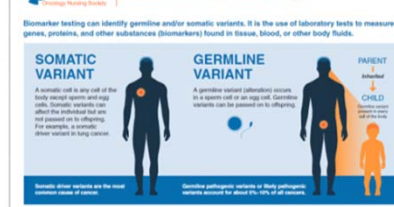


9

## Genomics Resources

[ons.org/learning-libraries/precision-oncology](https://ons.org/learning-libraries/precision-oncology)

### Biomarker Testing



### Genomics and Precision Oncology Learning Library

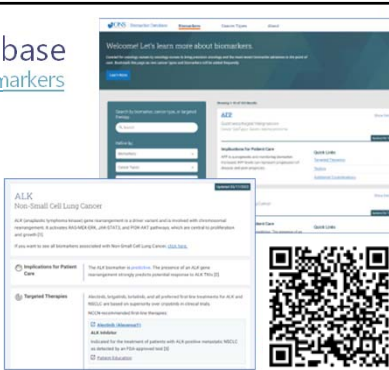


10

## Biomarker Database

[biomarkers.ons.org/biomarkers](https://biomarkers.ons.org/biomarkers)

Curated for oncology nurses by oncology nurses to bring precision oncology and the most recent biomarker advances to the point of care.

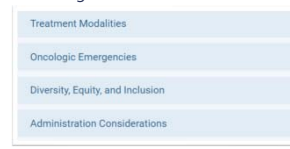


11

## Huddle Cards

[ons.org/huddle-cards](https://ons.org/huddle-cards)

- One page, "bite-size" education on relevant topics to oncology nurses
- Perfect for quickly reviewing during shift huddles or staff meetings



### ONS HUDDLE CARD IMMUNOTHERAPY

**Approach**  
Immunotherapy harnesses the immune system's innate ability to recognize and destroy cancer cells. For example, certain cancers avoid destruction by the immune system by having surface that turn off immune cell function. Immunotherapy can block these proteins, giving the immune system a chance to respond. Some types of immunotherapies have response so if the tumor is dormant for a period or the patient relapses, the immune system can respond.

**Examples**  
Checkpoint inhibitors, monoclonal antibodies, adoptive cell transfer

**Benefits**

- Immunologic memory can prevent recurrence
- May have fewer acute, dose-dependent side effects, compared to standard chemotherapy
- May be used in combination with other therapies
- Often has durable responses

**Limitations**

- Requires a working immune system
- May take longer to see effects
- Cancer does not always respond to immunotherapy



12

13

14

15

16

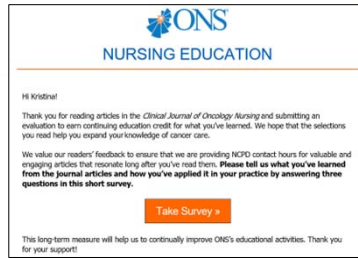
17

18

## Evaluation Follow-Up

Survey shared by email to request feedback on:

- Conferences
- Podcasts
- Journal articles
- Courses (in development)



19

## What questions do you have?



20